

# Important Questions of Control and Coordination Class 10 Science Chapter 7

Question 1.

Which is the largest and most prominent part of the brain? (Board Term I, 2013)

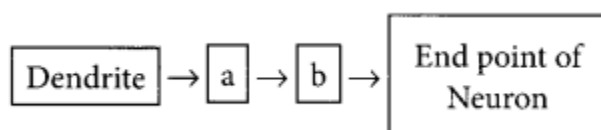
Answer:

Cerebrum is the largest and most prominent part of the brain.

Question 2.

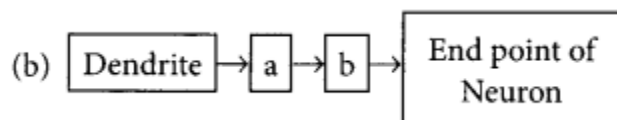
(a) Name one gustatory receptor and one olfactory receptor in human beings.

(b) Write a and b in the given flow chart of neuron through which information travels as an electrical impulse.



Answer:

(a) Gustatory receptors are receptors for taste present in taste buds on tongue and olfactory receptors are the receptors for smell present in nasal chambers.



In the given flow chart, a is cyton and b is axon.

Question 3.

Write the main functions of the following :

(a) sensory neuron

(b) cranium

(c) vertebral column

(d) motor neuron. (Board Term I, 2017)

Answer:

(a) Sensory neuron occur in sense organs and receive stimuli through their dendrites.

The sensory neurons transmit impulses towards the central nervous system (brain and spinal cord) with the help of their axons.

(b) Cranium : The bones of cranium or brain box protect the brain from mechanical injury.

(c) Vertebral column : Major function of the vertebral column is protection of the spinal cord and carries the weight of the upper body.

(d) Motor neuron: The dendrites of these neurons synapse with axons of interneurons in central nervous system. They transmit impulses from central nervous system towards effectors (muscles or glands). The latter respond to stimuli.

#### Question 4.

Why does the flow of signals in a synapse from axonal end of one neuron to dendritic end of another neuron take place but not in the reverse direction? Explain. (AI 2019)

Answer:

At the synapse, (functional junction between neurons) axon terminal comes in close proximity to the dendron terminal of next neuron. Axon terminal is expanded to form pre-synaptic knob and the other dendrite terminal forms post- synaptic depression.

In between the two, lies a narrow fluid filled space called synaptic cleft. As the nerve impulse reaches the pre-synaptic knob, the synaptic vesicles get stimulated to release neurotransmitter in the synaptic cleft. The neurotransmitter molecules diffuse across the gap to come in contact with post-synaptic membrane. In this way, nerve impulse passes across the minute gap to stimulate dendron of other neuron. The synapse acts as a one-way valve to conduct impulse in one direction only. This is so because chemical substance called neurotransmitter is secreted only on one side of the gap, i.e., on axon's side. It carries impulse across the synapse and passes it to the dendron of the other neuron. In this way, impulses travel across the neurons only in one direction, i.e., from axon of one neuron to dendron of other neuron through a synapse.

#### Question 5.

"Reflex arcs continue to be more efficient for quick responses". Justify this statement giving reason. (Board Term I, 2017)

Answer:

Reflex action is an automatic and spontaneous response to a stimulus. The pathway taken by nerve impulses and responses in a reflex action is called a reflex arc. It consists of receptor, sensory nerve (afferent), spinal cord, motor nerve (efferent) and effector (muscles or glands). Reflex arc is evolved in animals because the thinking process of the brain is not fast enough. Reflex arc enables the body to give quick responses to harmful stimuli so that chances of damage to body are decreased. It also prevents overloading of brain, so prevents its fatigue. Many animals have very little or none of the complex neuron network needed for thinking. So, it is likely that reflex arc has evolved as an efficient way of functioning in the absence of true thought processes.

However, even after complex neuron networks have come into existence, reflex arcs continue to be more efficient for quick responses.

Question 6.

(a) Define reflex arc.

(b) Trace the sequence of events which occur in our body when a bright light is focussed on your eyes. (Board Term I, 2016)

Answer:

(a) The pathway taken by the nerve impulses in a reflex action, from receptor organ to spinal cord and back to effector organ of reflex action is called reflex arc. Receptor organ could be a sense organ such as eyes, skin, etc., and effector organ could be muscles, glands, etc.

(b) When a bright light is focussed on eye, receptor cell receives the stimulus and an impulse is generated. This impulse is passed on to sensory neuron, then it goes to brain, brain sends the impulse to the motor neuron which contracts the pupil. Sequence of events can be summarised as : Photoreceptors in eye → Sensory (Receptor) neuron → Brain → Motor (Effector) neuron → Eye muscle → Constriction of pupils

Question 7.

(a) Draw a neat diagram of a neuron and label (i) dendrite and (ii) axon.

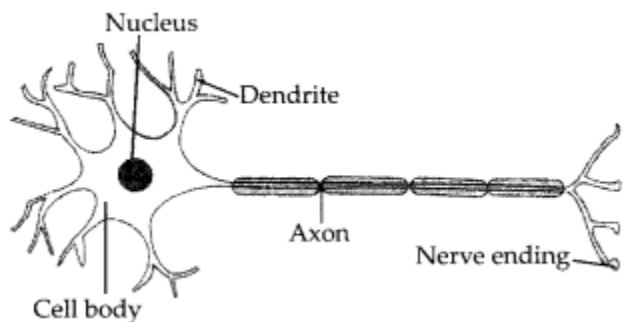
(b) Which part of the human brain is:

(i) the main thinking part of the brain?

(ii) responsible for maintaining the posture and balance of the body? (Board Term I, 2015)

Answer:

(a) Diagrammatic representation of a neuron is as follows:



(b) (i) Forebrain which includes cerebrum, olfactory lobes and diencephalon, is the main thinking part of the brain.

(ii) Cerebellum, part of hindbrain is responsible for maintaining the posture and balance of the body.

Question 8.

Mention three major regions of brain. Write one function of each. (Board Term I, 2014)

Answer:

Brain is divided into three main regions forebrain, midbrain and hindbrain.

(i) Forebrain consists of cerebrum, olfactory lobes and diencephalon. Its main function is thinking and controlling various activities such as touch, smell, hearing, speech and sight.

(ii) Midbrain controls reflex movements of the head, neck and trunk in response to visual and auditory stimuli.

(iii) Hindbrain has three centres called pons, cerebellum and medulla. This part is responsible for regulating respiration, maintaining posture and balance of body and controlling involuntary actions such as heartbeat, breathing, swallowing, coughing, sneezing, vomiting, etc.

Question 9.

State one example of chemotropism. (Board Term I, 2015)

Answer:

Growth of pollen tube towards the ovule due to chemical stimulus during the process of fertilisation in a flower is an example of chemotropism.

Question 10.

What is meant by tropic movements? (Board Term I, 2013)

Answer:

Directional movements or orientations of specific part of a plant in response to external stimuli are called tropisms or tropic movements.

Question 11.

State the two types of movements seen in plants. Give one example of each type. (Board Term I, 2016)

Answer:

Two types of movements seen in plants are:

(i) Nastic movements are movements independent of growth that are non-directional and occur due to turgor changes, e.g., closing of leaves in response to touch stimulus in 'touch me not' plant.

(ii) Tropic movements or tropism are movements due to growth, that are directional and very slow, e.g., movement of a part of the plant in response to light.

Question 12.

Define geotropism. Draw a labelled diagram of a plant showing geotropic movement of its parts. (2020)

Answer:

Geotropism refers to the upward and downward growth of shoots and roots respectively in response to the pull of earth or gravity. If the plant part moves in the direction of gravity, it is called positive geotropism. Likewise, if the plant part moves against the direction of gravity, it is termed as negative geotropism. Shoots are usually negatively geotropic and roots are usually positively geotropic. A well labelled diagram of plant showing geotropism is:



Question 13.

What are plant hormones? Name the plant hormones responsible for the following :

- (i) Growth of stem
- (ii) Promotion of cell division
- (iii) Inhibition of growth
- (iv) Elongation of cells (Delhi 2019)

Answer:

Plant hormones or phytohormones are chemical substances produced naturally in plants and capable of translocation and regulating one or more physiological processes when present in low concentration. These are also known as plant growth substances or plant growth regulators.

The plant hormones responsible for different functions are as follows:

- (i) Growth of stem : Gibberellins (Gibberellic acid) promote growth in stems.
- (ii) Promotion of cell division : Cytokinins promote cell division in plants.
- (iii) Inhibition of growth : ABA (Abscissic acid) promotes dormancy in seeds as well as in

buds and thus inhibits growth.

(iv) Elongation of cells : Auxin and cytokinin both cause cell elongation.

Question 14.

Define phototropism. Name the plant hormone which is responsible for phototropism.

(Board Term I, 2016)

Answer:

Phototropism is the movement of a part of the plant in response to light. Shoots generally grow towards light and are said to be positively phototropic, while roots grow away from light and are said to be negatively phototropic.

The growth movement of the plant part (stem) is caused by the action of auxin hormone. Auxin causes cell elongation. Thus, causing growth of stem towards the light stimulus.

Question 15.

(a) What are phytohormones? List four types of phytohormones. Where are these hormones synthesised?

(b) What happens when a growing plant detects light? Explain in brief. (Board Term I, 2017)

Answer:

(a) Phytohormones are chemical substances produced naturally in plants and are capable of translocation and regulating one or more physiological processes when present in low concentration. Plant hormones help to coordinate growth, development and responses to the environment. Plant hormones are also known as plant growth substances or plant growth regulators.

Types of hormone and their site of synthesis are as follows:

Plant hormone	Site of Synthesis
(i) Auxin	Auxin hormone is synthesised by the meristematic tissue at the tip of the stem and roots.
(ii) Gibberellins (Gibberellic acid)	Gibberellins are synthesised in young leaves, roots and shoots and transported to other parts of the plant.
(iii) Cytokinin	It is synthesised in roots and transported to shoot region through xylem.
(iv) Ethylene	It is formed in almost all plant parts – roots, leaves flowers, fruits, seeds, etc.

(v) Absciscic acid	It is produced in many parts of the plant but more abundantly inside the chloroplast of green cells.
--------------------	--

(b) Plants respond to light by showing growth movement towards light (phototropism). This growth movement of the plant part (stem) is caused by the action of auxin hormone. The auxin hormone is synthesised in the meristematic tissue at the tip of the stem. Auxin diffuses uniformly down the stem in plants that are kept in the open and receive sunlight from above. Due to presence of auxin equally on both the sides, the stem grows up straight because both the sides of the stem show growth at the same place. But when sunlight is unidirectional, auxin- gets accumulated towards the shady region of (he shoot. This causes the cells to elongate and stem to bend towards light.

Question 16.

List the sequences of events that occur when a plant is exposed to unidirectional light, leading to bending of a growing shoot. Also name the hormone synthesised and the type of movement that takes place. (Board Term I, 2016)

Answer:

Refer to answer 15 (b).

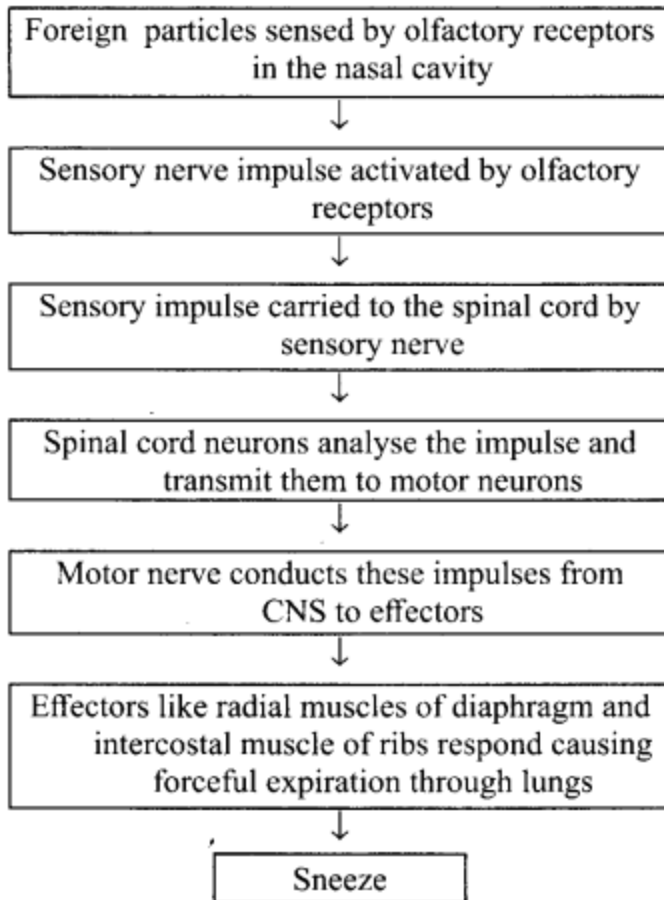
Question 17.

(a) Define reflex arc. Draw a flow chart showing the sequence of events which occur during sneezing.

(b) List four plant hormones. Write one function of each. (Board Term I, 2014)

Answer:

(a) Reflex arc is defined as the pathway or route taken by nerve impulses in a reflex action. Sequences of events that occur during sneezing can be depicted as :



(b) Four plant hormones are:

- (i) Auxins : These promote cell enlargement and cell differentiation in plants. These also promote stem and fruit growth.
- (ii) Gibberellins : These promote cell enlargement and cell differentiation in plants in the presence of auxins. These also promote growth in stems and fruits.
- (iii) Cytokinins : These promote cell division in plants. These play vital role in the morphogenesis in plants.
- (iv) Ethylene : It promotes growth and ripening of fruits. It helps in breaking the dormancy in buds and seeds.

Answer question numbers 18 to 21 on the basis of your understanding of the following information and related studied concepts :

Thyroid gland is a bilobed structure situated in our neck region. It secretes a hormone called thyroxine. Iodine is necessary for the thyroid gland to make thyroxine. Thyroxine regulates carbohydrates, protein and fat metabolism in the body. It promotes growth of body tissues also. When there is an excess of thyroxine in the body, a person suffers from hyperthyroidism and if this gland is underactive it results in hypothyroidism. Hyperthyroidism is diagnosed by blood tests that measure the levels of thyroxine and



Thyroid Stimulating Hormone (TSH). Hypothyroidism is caused due to the deficiency of iodine in our diet resulting in a disease called goitre. Iodised salt can be included in our diet to control it.

Question 18.

Where is thyroid gland situated?

Answer:

Thyroid gland is situated in our neck region.

Question 19.

State the function of thyroxine in human body.

Answer:

Thyroxine regulates carbohydrate, protein and fat metabolism in the body. It promotes growth of body tissues also.

Question 20.

What is hyperthyroidism?

Answer:

Hyperthyroidism occurs when there is excess of thyroxine in the body.

Question 21.

How can we control hypothyroidism? (2020)

Answer:

Hypothyroidism can be controlled by using iodised salt.

Question numbers 22 to 25 are based on table given below. Study the table in which the levels of Thyroid Stimulating Hormone (TSH) in women are given and answer the questions that follow on the basis of understanding of the following paragraph and the related studied concepts :

Age Range	Normal (mU/L)	Low (mU/L)
18-29 years	0.4-2.34 mU/L	< 0.4 mU/L
30-49 years	0.4-4.0 mU/L	< 0.4 mU/L
50-79 years	0.46-4.68 mU/L	< 0.46 mU/L

Women are at greater risk for developing abnormal TSH levels during menstruation, while giving birth and after going through menopause. Around 5% of women in the United States have some kind of thyroid problem compared to 3% of men. Despite claims that high TSH increases your risk for heart disease, a 2013 study found no link between high TSH and heart diseases. But a 2017 study showed that older women are especially at risk for developing thyroid cancer if they have high TSH levels along with thyroid nodules.

Question 22.

A 35 years old woman has TSH level 6.03 mU/L. What change should she bring in her diet to control this level?

Answer:

(a) A 35 year old woman with TSH level 6.03 mU/L means she is suffering hypothyroidism. Iodised salt can be included in her diet to control it.

Question 23.

When do women face a greater risk of abnormal TSH level?

Answer:

Women are at greater risk for developing abnormal TSH levels during menstruation, while giving birth and after going through menopause.

Question 24.

State the consequence of low TSH level.

Answer:

The low TSH level means that there is an excess of thyroxine (hyperthyroidism) in the body secreted by thyroid gland. So, the pituitary gland starts producing less TSH.

Question 25.

Name the mineral that is responsible for synthesis of hormone secreted by thyroid gland. (2020)

Answer:

Thyroid gland makes a hormone called thyroxine, which contains iodine.

Question numbers 26 to 29 are based on the table and related information in the passage given below: Thyroid Stimulating Hormone (TSH) stimulates thyroid gland to produce thyroxine. Study the table given below.

Table : TSH levels during pregnancy

Stage of pregnancy	Normal (mU/L)	Low (mU/L)	High (mU/L)
First trimester	0.2-2.5	<0.2	2.5 – 10
Second trimester	0.3-3.0	<0.3	3.01
Third trimester	0.8-5.2	<0.8	> 5.3

It is important to monitor TSH levels during pregnancy. High TSH levels and hypothyroidism can especially affect chances of miscarriage. Therefore, proper medication in consultation with a doctor is required to regulate/control the proper functioning of the thyroid gland.

Question 26.

Give the full form of TSH.

Answer:

The full form of TSH is Thyroid Stimulating Hormone.

Question 27.

State the main function of TSH.

Answer:

TSH stimulates thyroid gland to produce thyroxine.

Question 28.

Why do TSH levels in pregnant women need to be monitored?

Answer:

TSH levels in pregnant women need to be monitored as high TSH levels and hypothyroidism can increase chances of miscarriage.

Question 29.

A pregnant woman has TSH level of 8.95 mU/L. What care is needed for her? (2020)

Answer:

A pregnant women with high TSH level needs proper medication in consultation with a doctor to control the proper functioning of thyroid gland.

Question 30.

A squirrel is in a scary situation. Its body has to prepare for either fighting or running away. State the immediate changes that take place in its body so that the squirrel is able to either fight or run. (2020)

Answer:

When squirrel is in a scary situation then its nervous system stimulates the adrenal glands to secrete more adrenaline hormone into blood.

This adrenaline hormone increases heartbeat, breathing rate, blood flow into muscles and causes liver to put more stored glucose into its blood. All these actions of adrenaline hormone produces a lot of energy in squirrel's body. In this way, squirrel prepares itself for fighting or running away action.

Question 31.

Why is chemical communication better than electrical impulses as a means of communication between cells in a multicellular organisms? (2020)

Answer:

In animals, the message communicated in the form of nerve impulses, from receptors to central nervous system and from latter to effectors is very quick. But nerve impulses can reach only those animal cells which are connected by the nervous tissue. These cells after generation and transmission of nerve impulses, take sometime to reset their mechanism before a new impulse is generated and transmitted. It means, cells cannot continuously generate and transmit electrical impulses. This is the reason most multicellular organisms use another means of communication called chemical communication. In chemical communication information spreads out throughout the body by blood and its effects lasts longer. Chemical communication is however slow but it can reach all the cells of body regardless of nervous connections.

Question 32.

A cheetah, on seeing a prey moves towards him at a very high speed. What causes the movement of his muscles? How does the chemistry of cellular components of muscles change during this event? (2020)

Answer:

The cheetah senses its prey by photoreceptors and the information is sent to the central nervous system. The response is then carried by neurons. Along with nervous system, the hormonal system also plays a role. Adrenaline hormone produced by the adrenal glands triggers the flight or fight action. On seeing a prey, these hormones are released into the cheetahs blood stream. It speeds up heartbeat, breathing increases blood flow into leg muscles and causes liver to put more stored glucose into cheetahs blood. All these actions of adrenline hormone produces a lot of energy which helps cheetah to run fast.

Question 33.

Name the hormones secreted by the following endocrine glands and specify one function of each: (a) Thyroid (b) Pituitary (c) Pancreas. (2018)

Answer:

(a) Thyroid gland secretes three hormones : thyroxine ( $T_4$ ), triiodothyroxine ( $T_3$ ) and calcitonin. Thyroxine and triiodothyronine maintain the basal metabolic rate (BMR) of the body by regulating the rate of oxidation of carbohydrates, fats and proteins and production of energy in our body. They promote growth of body tissues and development of mental faculties.

Calcitonin regulates the concentration of calcium and phosphorus in the blood.

(b) Pituitary secretes following hormones :

1. Growth hormone (GH) or somatotrophic hormone controls the overall development of body, muscles, bones and tissues.
2. Thyroid stimulating hormone (TSH) controls growth and functions of thyroid gland.
3. Adrenocorticotrophic hormone (ACTH) stimulates adrenal cortex to secrete cortisol hormone.
4. Follicle stimulating hormone (FSH) in males, stimulates sperm formation and in females, development of follicle cells into mature eggs.
5. Luteinising hormone (LH) stimulates secretion of testosterone in males and estrogen and progesterone in females.
6. Prolactin hormone (PRL) responsible for growth of mammary glands and milk production in females.
7. Melanocyte stimulating hormone (MSH) stimulates the synthesis of melanocytes.
8. Oxytocin stimulates lactation after child birth.
9. Vasopressin regulates water balance in body fluids.

(c) Pancreas secretes following hormones :

(i) Insulin regulates the conversion of glucose to glycogen, i.e., it lowers the blood glucose level.

(ii) Glucagon is responsible for regulation of glycogen to glucose, i.e., increase blood glucose level.

Question 34.

(a) How does chemical coordination take place in animals?

(b) It is advised to use iodised salt. Give reason. (Board Term 1, 2017)

Answer:

(a) The endocrine system consists of specialised glands (endocrine glands) which brings about control by sending chemical messengers termed hormones. These glands secrete hormones directly into the blood. Hormones reach the target organs via blood and regulate the activities of these organs, thus coordinating the functioning of living organisms and also their growth.

(b) Iodine is necessary for the making of thyroxine hormone by thyroid gland. Therefore, deficiency of iodine in the diet can cause deficiency of thyroxine hormone in the body.

Question 35.

(a) An old man is advised by his doctor to take less sugar in his diet. Name the disease from which the man is suffering. Mention the hormone due to imbalance of which he is suffering from this disease. Which endocrine gland secretes this hormone?

(b) Name the endocrine gland which secretes growth hormone. What will be the effect of the following on a person

(i) deficiency of growth hormone

(ii) excess secretion of growth hormone? (Board Term I, 2016)

Answer:

(a) Old man who is advised by his doctor to take less sugar in his diet is suffering from diabetes mellitus that occurs due to imbalance of insulin hormone. Endocrine part of islets of Langerhans in pancreas secrete insulin hormone.

(b) Growth hormone (GH) or somatotrophic hormone (SH) is secreted by pituitary gland. Effect of the following on a person:

(i) Deficiency of growth hormone (hypoactivity) causes dwarfism.

(ii) Excess secretion of growth hormone (hyperactivity) causes excessive growth of bones making the person very tall (gigantism).

Question 36.

Name the hormone required for the following. Also mention the name of endocrine gland from which that hormone is secreted:

(a) Lowering of blood glucose.

(b) Development of moustache and beard in human males.

(c) Metabolism of carbohydrates, fats and proteins. (Board Term I, 2015)

Answer:

(a) The hormone that lowers blood sugar level is insulin. The function of insulin hormone is to lower the blood sugar level (or blood glucose level, i.e., it controls the metabolism of sugar. It is secreted by the endocrine part of pancreas called islets of

Langerhans.

(b) Testes secretes the male sex hormone called testosterone, which is responsible for development of male sex organs and male features such as deeper voice, moustache, beard and body hair.

(c) Thyroxine hormone is synthesised by thyroid gland. Thyroxine controls the rate of metabolism of carbohydrates, fats and proteins.

Question 37.

(a) Complete the following table:

Name of the hormone	Gland which secretes the hormone	Functions of the hormone
(i) Thyroxine	Thyroid	---
(ii) Growth Hormone	--	Regulates growth and development of the body
(iii) Insulin	Pancreas	---

(b) List three characteristics of animal hormones. (Board Term I, 2015)

Answer:

(a) (i) Functions of thyroxine hormone is regulation of carbohydrates, protein and fat metabolism.

(ii) Gland that secretes growth hormone is pituitary gland.

(iii) Function of insulin is to regulate the conversion of glucose to glycogen, i.e., it lowers blood glucose level.

(b) Three characteristics of animal hormones are:

(i) Hormones are synthesised by endocrine glands and secreted directly into the blood stream.

(ii) They are produced at a place other than the site of action. They travel through blood and have specific action on a specific target organ.

(iii) Chemically the hormones may be peptides, proteins, amines or steroids.

Question 38.

List in tabular form three differences between nervous control and chemical control.

(Board Term I, 2013)

Answer:

Differences between nervous control and chemical control are as follows:

Nervous control	Chemical control
(i) Information travels rapidly in a fraction of second.	Information travels slowly.
(ii) Information is sent as an electrical impulse along axon and as a chemical across synapse.	Information is sent as a chemical messenger called hormone, via blood stream.
(iii) Information is directed to specific receptors which can be one or a few nerve fibres, gland cells or other neurons.	Information is spread throughout the body by blood from which the target cells or organs pick it up.
(iv) Effect of message usually lasts for a very short while.	Effect of message usually lasts longer.

Question 39.

A gland secretes a particular hormone. The deficiency of this hormone in the body causes a particular disease in which the blood sugar level rises.

- (i) Name the gland and the hormone secreted by it.
- (ii) Mention the role played by this hormone.
- (iii) Name the disease caused due to deficiency of this hormone. (Board Term I, 2013)

Answer:

- (i) Pancreas secretes insulin hormone.
- (ii) Insulin regulates the conversion of glucose to glycogen, i.e., it lowers blood glucose level.
- (iii) Deficiency of insulin hormone causes diabetes mellitus.

Question 40.

- (a) Name one organ each where growth hormone is synthesised in man and plant.
- (b) List the sequence of events that occur when a plant is exposed to unidirectional light, leading to bending of a growing shoot. Also name the hormone and the type of movement. (Board Term I, 2014)

Answer:

(a) In man, growth hormone is synthesised by pituitary gland which is present below the brain. Growth hormone controls the growth of human body.

In plants, auxins promote the plant growth. Auxins are produced by growing apices of the stems and roots. They migrate to the regions of their action, and initiate cell division and cell elongation.



(b) (i) When a plant is exposed to unidirectional light, the shoot tips synthesise phytohormone called auxin.  
(ii) Auxins slowly diffuse towards the shady side.  
(iii) As auxins help the plant to grow, cells on the shady side grow longer than the ones which are exposed to light.  
(iv) Hence, causing the plant to bend towards light. This type of movement caused due to hormone auxin is called phototropism.  
Shoots generally grow towards the light hence show positive phototropism and roots grow away from light and show negative phototropism.

41. Why is it advised to use iodised salt in our diet ?

Answer. Iodine stimulates the thyroid gland to produce thyroxine hormone. Deficiency of this hormone results in the enlargement of the thyroid gland. This can lead to goitre.

42. State how concentration of auxin stimulates the cells to grow longer on the side of the shoot which is away from light ?

Answer. When light falls on the side of the shoot auxin diffuses towards the shady side of the shoot. This concentration of the auxin stimulates the cell to grow longer on the side of the shoot which is away from light. Thus plant appears to bend towards light.

43. What is synapse ? In a neuron cell how is an electrical impulse created and what is the role of synapse in this context ?

Answer. A synapse is the gap between the two neurons. Here the axon terminal of one neuron is in close proximity to the dendrite of the second neuron. When a nerve impulse reaches the knob like nerve ending of an axon, a tiny amount of a chemical substance is released in the synapse. This chemical substance is called as the neurotransmitter. At synapse the electrical signals converted into chemicals, that can easily cross over the gap and pass on to the next neurons where it again converted into electrical signals.

44. Give an example of a plant hormone that promotes its growth. Where it is synthesized ?

Answer. Plant hormone that promotes growth is auxin. It is synthesized at the tip of the plant stem.

45.(i) Name the hormones that are released in human males and females when they reach puberty.

(ii) Name a gland associated with brain. Which problem is caused due to the deficiency of the hormone released by this gland ?

Answer.

(i) Testes in males produces hormone testosterone.

Ovaries in females produces hormone oestrogen.

(ii) Pituitary gland present in the brain is responsible for body growth, development of bones and muscles (if excess-gigantism) (if less-dwarfism).

46. Write one example each of the following tropic movements :

(i) Positive phototropism (ii) Negative phototropism

(iii) Positive geotropism (iv) Negative geotropism

(v) Hydrotropism (vi) Chemotropism

Answer.

(i) Positive phototropism: shoots growing towards light.

(ii) Negative phototropism: roots growing away from light towards ground.

(iii) Positive geotropism: growth of roots towards earth due to the pull of the earth.

(iv) Negative geotropism: shoots growing away from the earth.

(v) Hydrotropism: roots growing towards the source of water.

(vi) Chemotropism: growth of pollen tubes towards the ovules.

47.(a) Name the hormone which is released into the blood when its sugar level rises.

Explain the need of Chemical communication in multicellular organisms the organ which produces this hormone and its effect on blood sugar level. Also mention the digestive enzymes secreted by this organ with one function of each.

(b) Explain the need of Chemical communication in multicellular organisms.

Answer.

(a) Glucose is needed by cells for respiration. It is important that the concentration of glucose in the blood is maintained at a constant level. Insulin is a hormone produced by the  $\beta$ -cells that regulates glucose levels in the blood.

In order for multicellular organisms to function properly, their cells must communicate. For instance, your muscles must contract when your brain sends a message to contract.

Pancreas produces insulin and  $\alpha$ -cells which increase glucose in blood. It also – produces digestive enzyme (pancreatic amylase).

(b) Cell-to-cell signaling is a critical component of coordinating cellular activities.

Through this communication, messages are carried from signaling cells to receiving cells, also known as target cells. This signaling occurs with proteins and other types of

signaling molecules. Other things which happens in our body due to cell communication are – growth and development, cellular reproduction, tissue repair, sensing pain, etc.

48.State the function of:

- (i) gustatory receptors, and
- (ii) olfactory receptors.

Answer.

- (i) Gustatory receptors – these are sensitive to taste
- (ii) Olfactory receptors – these are sensitive to smell.

49.(a) Explain any three directional movements in plants.

(b) How brain and spinal cord are protected in human ?

(c) Name the master gland present in the brain.

Answer.

(a) Stimuli is responsible for the movement of the plant parts towards or away from it. This movement is called as Tropic Movement.

Phototropism: movement of plant towards or away from the light. Geotropism: movement of plant parts towards the earth or away from it. Hydrotropism: movement of plant parts towards or away from any source of water.

(b) Both the brain and the spinal cord are protected by bone: the brain by the bones of the skull and the spinal cord is protected by a set of ring-shaped bones called vertebrae. They are both cushioned by layers of membranes called meninges as well as a special fluid called cerebrospinal fluid. This fluid helps to protect the nerve tissue to keep it healthy, and remove waste products.

(c) Pituitary gland present in the brain is known as the master gland.

50. Name the part of the brain which controls posture and balance of the body.

Answer.Cerebellum in hind-brain controls the posture and balance of the body.

51. Mention the part of the body where gustatory and olfactory receptors are located.

Answer. Gustatory receptors are located in Cerebrum of fore-brain. Olfactory receptors are located in Olfactory lobe of fore-brain.

52. Smita's father has been advised by a doctor to reduce his sugar intake.

1. Name the disease he is suffering from and name the hormone whose deficiency is? ,
2. Identify the gland that secretes it and mention the function of this hormone.
3. Explain how the time and amount of secretion of this hormone is regulated in human system.

Answer.

1. He is suffering from diabetes. Deficiency of insulin causes diabetes.
2. Pancreas secretes insulin. Insulin helps in regulating blood sugar.
3. When the sugar level in blood increases, it is detected by the  $\alpha$ -cells of the pancreas which responds by producing more insulin. As the blood sugar level falls, insulin secretion is reduced.

53.State the functions of plant hormones. Name four different types of plant hormones.

Answer. Plant hormones help to coordinate growth, development and responses in environment.

Four different types of plant hormones are – Auxins, Gibberellins, Cytokinins, Ethylene and Absciscic acid.

1. Auxins control the tropic (growth related) movements of the plants in response to light, gravity, touch etc by increasing the size of cells. Under the influence of auxins, the plant stem bends towards unidirectional light where as the roots bend away from it.
2. Gibberellins stimulate stem elongation and leaf expansion. Its application causes stem elongation in small plants such as cabbage. Spraying gibberellins on sugarcane plant increases the stem size and hence the yield.
3. Cytokinins are produced in regions of the plant body where rapid cell division occur, such as root tips, developing shoot buds, young fruits and seeds. Cytokinins promote growth by stimulating cell division. They also help in production of new leaves and chloroplasts in leaves.
4. Ethylene causes ripening of the fruits.
5. Absciscic acid inhibits (i.e., slows down) the growth in different parts of the plant body. It also inhibits germination of seeds. It increases the tolerance of plant to different kinds of stresses such as temperature changes. So, it is also called the stress hormone in plants. It also causes the drying and falling of older leaves, flowers and fruits.

54.(a) How is brain protected from injury and shock?

(b) Name two main parts of hind brain and state the functions of each.

Answer.

(a) Brain is covered by a three layered membrane called meninges. In between the layers of meninges and brain, cavity fluid named Cerebro Spinal Fluid (CSF) is filled. The hard skull covers the meninges. Thus Meninges, CSF and Skull protects our brain for a certain extent.

(b) Two main parts of hind-brain are – Medulla and Cerebellum. Their functions are:  
Medulla : Involuntary actions such as blood pressure, salivation and vomiting.  
Cerebellum : It is responsible for precision of voluntary actions and maintaining the posture and balance of the body.

55.(a) Which plant hormone is present in greater concentration in the areas of rapid cell division?

(b) Give one example of a plant growth promoter and a plant growth inhibitor.

Answer.

(a) Cytokinin is present in greater concentration in the areas of rapid cell division.

(b) An example of a plant growth promoter is gibberellins and example of a plant growth inhibitor is abscisic acid.

56.Which organ secretes a hormone when blood sugar rises in our body? Name the hormone and name one enzyme released by this organ.

Answer.Pancreas secretes a hormone when blood sugar rises in our body. Insulin is the hormone released by this organ and the name of the enzyme is pancreatic juice.

57.(a) Explain how auxins help in bending of plant stem towards light.

(b) State the objective of the experiment for which experimental set-up is shown in the given diagram.

Answer.

(a) In plant shoots, the role of auxin is to cause a positive phototropism, i.e. to grow the plant towards the light. When light is incident on a plant from one direction, it causes the auxins to redistribute towards the shaded side of the plant. One function of auxin is to cause cell elongation. The redistribution causes the cells on the shaded side to elongate more than those on the side with the light shining on them. This causes the shoot to bend towards the light.

(b) The objective of the experiment is to show phototropic movement of plant.

58.What causes a tendril to encircle or coil around the object in contact with it is? Explain the process involved.

Answer. When a tendril comes in contact with any support, the part of the tendril in

contact with the object does not grow as rapidly as the part away of the tendril away from the object. This cause the tendril to circle around the object and thus, cling to it.

59. Name any three endocrine glands in human body and briefly write the function of each of them.

Answer. Three endocrine glands with their function in human body are as follows:

1. Thyroid gland : It secretes a hormone called thyroxine which regulates the metabolism of carbohydrates, fats and proteins in the body and so provide the best balance for nutrients and mental ability.
2. Adrenal gland : It secretes two hormones—adrenalin and corticoid hormones regulate blood pressure, heartbeat, breathing rate and carbohydrate metabolism.
3. Pancreas: It secretes two hormones—insulin and glucagon. Insulin hormone lowers the blood glucose level. Glucagon hormone increases the blood glucose level.

60. Which part of the brain controls involuntary actions? Write the function of any two regions of it. Answer. Hind-brain controls the involuntary actions. Cerebellum controls the coordination of body movement and posture. Medulla oblongata regulates center for swallowing, coughing, sneezing and vomiting.

61. What is chemotropism? Give one example. Name any two plant hormones and mention their functions.

Answer. Chemotropism is the movement of a part of the plant in response to a chemical stimulus. It can be positive chemotropism or negative chemotropism.

Example: The growth of pollen tube towards a chemical which is produced by an ovule during the process of fertilisation in a flower.

Two plant hormones with their functions are as follows:

Auxins promote cell elongation, root formation, cell division, respiration and other physiological processes like protein synthesis, etc.

Gibberellins stimulate stem elongation, seed germination and flowering.

62. State the functions of any three of the structural and functional unit of nervous system.

Answer. The structural and functional unit of nervous system, i.e. neuron with their functions are as

1. Cell body: Stimulus received from dendrite is changed into impulse in the cyton.
2. Dendrites: They receive sensation or stimulus, which may be physical or chemical.

3. Axon: It conducts impulse away from the cell body.

63. What are 'hormones'? State one function of each of the following hormones:

(i) Thyroxine (ii) Insulin

Answer. Hormones are the chemical substances which coordinate and control the activities of living organisms and also their growth. The term hormone was introduced by Bayliss and Starling.

(i) Function of Thyroxine: This hormone regulates the metabolism of carbohydrates and fats.

(ii) Function of insulin: This hormone helps in regulating sugar level in the blood.

64. What is the function of receptors in our body? Think of situation where receptors do not work properly. What problems are likely to arise?

Answer. Receptors are present in our all parts of the body for example in skin, eye, nose tongue etc. They detect the signals and then send them to brain in the form of electrical signals. If these receptors are damaged then it they will not detect the input which leads to the harm for our body in dangerous situation.

65. How is the spinal cord protected in the human body?

Answer. Spinal cord is enclosed in a bony cage called vertebral column.

66. A potted plant is made to lie horizontally on the ground. Which part of the plant will show

(i) positive geotropism?

(ii) negative geotropism?

Answer.

(i) Root (ii) Shoot.

67. Mention the function of the hind-brain in humans.

Answer. Hind brain controls respiration, cardio-vascular reflexes and gastric secretions. It also modulates the motor commands initiated by the cerebrum.

68. Mention the function of adrenaline hormone.

Answer. Adrenaline hormone is released into the blood from the adrenal gland during stimulation of the nervous system on seeing any adverse situation of fight or fright, it:

1. increases the blood pressure.
2. increases heart beat rate.

3. increases breathing rate.
4. diverts blood to essential organs including the heart, brain and skeletal muscles by dilating their blood vessels and constricting those of less essential organs, such as the skin and digestive system.

[Short Answer Type Questions\[I\] \[2 Marks\] -Year 2010](#)

69. Name, the two main organs of our central nervous system. Which one of them plays a major role in sending command to muscles to act without involving thinking process? Name the phenomenon involved.

Answer. The two main organs of CNS are brain and spinal cord.

Spinal cord plays a major role in sending command to muscles to act without involving thinking process. This phenomenon is called reflex action.

70. Name the hormone secreted by human testes. State its functions.

Answer. Testes secrete male sex hormone called testosterone. The function of testosterone is to regulate male accessory sex organs and secondary sexual characters like moustache, beard and voice.

71. Name and explain the function of the hormone secreted by the pituitary gland in humans.

Answer. Hormones secreted by pituitary gland alongwith their functions are:

1. Growth hormone: It regulates growth and development of bones and muscles.
2. Trophic hormone: It regulates secretion of hormones from other endocrine glands.
3. Prolactin hormone: It regulates the function of mammary glands in females.
4. Vasopressin hormone: It regulates water and electrolyte balance in the body,
5. Oxytocin hormone : It regulates ejection of milk during lactation.

[Short Answer Type Questions\[II\] \[3 Marks\] -Year 2010](#)

72. What is a reflex action? Describe the steps involved in a reflex action.

Answer.

Reflex action: It is defined as an unconscious, automatic and involuntary response of effectors, i.e. muscles and glands, to a stimulus, which is monitored through the spinal cord.

Mechanism of reflex action : It involves the following steps:



1. Receptor organ like skin perceives the stimulus and activates a sensory nerve impulse.
2. Sensory organ carries message in the form of sensory impulse to the spinal cord.
3. The spinal cord acts as modulator : The neurons of spinal cord transmit the sensory nerve impulse to motor neuron.
4. Motor never conducts these impulses to the effectors like leg muscles which responds by pulling back the organ away from the harmful stimulus.

73. A young green plant receives sunlight from one direction only. What will happen to its shoots ?

Answer. Shoots will bend towards the light and roots away from the light.

74. Name the plant hormones which help/promote (i) cell division (ii) growth of the stem and roots?

Answer. The plant hormones which help or promote:

- (i) Cell division — Cytokinins
- ii) Growth of the stem — Gibberellins

75. What is the function of thyroxine hormone in our body ?

Answer. Thyroxine hormone regulates the carbohydrate, protein and fat metabolism in the body so as to provide the best growth balance.

76. Name two tissues that provide control and coordination in multicellular animals.

Answer. The two tissues that provide control and coordination in multicellular animals are nervous and muscular tissues.

77. Which one of the following actions on touch is an example of chemical control?

- (i) Movement on the touch-sensitive plant.
- (ii) Movement in human leg.

Answer.

- (i) Movement on the touch-sensitive plant.

78. What are 'nastic' and 'curvature' movements? Give one example of each.

Answer. Nastic movements: These are non-directional movements which are neither towards nor away from the stimulus. Example: Dropping of leaves.

Curvature movements: In such movements plant organs move towards or away from the stimulus. Example: Bending of shoot towards a source of light.

79. Write the name and functions of any two parts of the human hind-brain.

Answer. Any two parts of human hind-brain with their functions are as follows:

- (i) Cerebellum, which controls the coordination of body movement and posture.
- (ii)

Medulla oblongata, which regulates the centre of swallowing, coughing, sneezing and vomiting.

80. What are plant hormones? Write two important functions of auxin.

Answer. Plant hormones can be defined as a chemical substance which is produced naturally in plants and are capable of translocation and regulating one or more physiological processes when present in low concentration. .

Two important functions of auxin are that it promotes cell elongation, root formation, cell division, etc.